

WEBSense REMOTE FILTERING



Websense® Remote Filtering extends the industry-leading web filtering and premier web security technology of Websense to include protection for remote office and mobile laptop users outside as well as inside the organization's network. Websense Remote Filtering allows organizations to apply internet use policies to remote office and mobile laptop users, protecting them from external security threats and preventing them from accessing malicious and inappropriate sites. A critical component of any organization's endpoint protection strategy, Websense Remote Filtering ensures secure internet use anytime and anywhere.

Prevent Exposure

Websense Remote Filtering protects remote and mobile users from visiting websites infected with spyware, drive-by spyware, bots, and keyloggers; phishing and pharming sites; and sites containing inappropriate content.

- Helps protect computers from the web-based security threats that exist in unsecured, public networks.
- Eliminates the potential introduction of malicious software into an organization from infected desktops and laptops upon network reentry.
- Mitigates the legal liability and compliance risks caused by inappropriate internet use.

Minimize Downtime

Websense Remote Filtering minimizes remote and mobile user downtime and frustration.

- Reduces the time spent by IT to troubleshoot and repair damage inflicted by malicious attacks on these desktops and laptops.
- Lessens the time required to resolve software conflicts due to unauthorized application downloads.

Save Money

Websense Remote Filtering cuts overhead and capital equipment expenses with its web filtering and web security solution for remote and mobile users.

- Reduces the labor costs associated with remediating security-related attacks.
- Helps cut overhead by reducing lengthy and multiple problem resolution calls between remote users and IT.
- Lowers administrative costs related to the transportation of computers and IT personnel to and from headquarters.
- Decreases the capital equipment costs required to maintain an adequate "loaner machine" inventory.

The secure internet access provided by Websense Remote Filtering protects remote office and mobile laptop users from the malicious threats lurking in unfiltered, publicly-accessible networks and reduces the cost, downtime, and user frustration associated with compromised computers in the field.

How Websense Remote Filtering Works

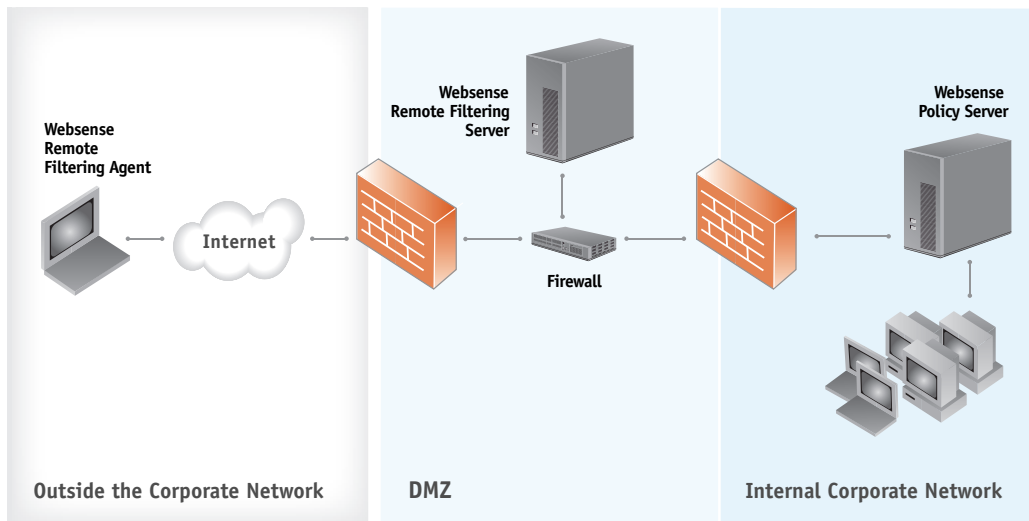
Websense Remote Filtering redirects the user's HTTP request for a website to the central corporate Websense Policy Server via the publicly-accessible Websense Remote Filtering Server. The Policy Server finds the user's internet use policy and allows or blocks access to the requested site accordingly. A VPN connection is not necessary.

Secure Policy Management for Remote and Mobile Users

Included with Websense Client Policy Manager™ and an add-on module for Websense Enterprise® or Websense Web Security Suite™, Websense Remote Filtering extends organizations' web filtering and web security policies to remote and mobile users regardless of their location or type of network connection. This efficient one-policy paradigm allows remote and mobile users to have the same policies and level of protection outside the corporate network as they would have inside the network.

Powerful Reporting on Remote and Mobile Web Usage

Websense Remote Filtering also extends the free, powerful monitoring and reporting tools available with Websense software to include remote and mobile user activities. Organizations can identify potential problem areas proactively through more complete real-time and historical views of all users' activities. With this information, IT administrators can refine internet access policies, further reducing the security, productivity, bandwidth, and legal risks associated with internet use in the organization.



The Websense Remote Filtering Agent communicates through the Websense Remote Filtering Server to the Websense Policy Server.

System Requirements

Remote Filtering Clients

- Microsoft® Windows® XP Professional with SP1 or SP2
- Microsoft Windows Server® 2003 Standard Edition or Enterprise Edition with SP1
- Microsoft Windows 2000 Professional, Server, or Advanced Server with SP3 or SP4

Remote Filtering Server

- Microsoft Windows Server 2003 Standard Edition or Enterprise Edition, or the same with SP1
- Microsoft Windows 2000 Server with SP3 or higher
- Red Hat® Enterprise Linux® 3 or 4: AS, ES, or WS, or Red Hat Linux 9
- Sun® Solaris™ 9 or 10

Summary

It has become critical for organizations to enable their people to work remotely, and as internet access becomes more pervasive in non-traditional settings, the need intensifies for a solution that protects remote and mobile users from the malicious threats lurking in publicly-accessible and unknown networks. The secure internet access provided by Websense Remote Filtering not only provides protection from these threats, but also reduces the cost, downtime, and frustration associated with compromised computers in the field. Protecting remote and mobile users while they are outside the network also minimizes the risk that they will introduce security issues into the network when they reconnect. In addition, organizations have the flexibility to observe remote usage patterns and fine-tune remote user policies for maximum efficiency and effectiveness.

Websense, Inc.
San Diego, CA USA
tel 800 723 1166
tel 858 320 8000
www.websense.com

Websense UK Ltd.
Chertsey, Surrey UK
tel +44 (0) 1932 796300
fax +44 (0) 1932 796601
www.websense.co.uk

Australia
websense.com.au

Italy
websense.it

Brazil
portugues.websense.com

Japan
websense.jp

Colombia
websense.com.es

Mexico
websense.com.mx

France
websense.fr

PRC
prc.websense.com

Germany
websense.de

Spain
websense.com.es

Hong Kong
websense.cn

Sweden
websense.com

India
websense.com

Taiwan
websense.cn

Ireland
websense.ie

Download a free 30-day evaluation today www.websense.com/downloads

