



***Celestix MSA™ security appliances deliver a combination of performance, reliability, ease of use, comprehensive support and low price for the deployment of Microsoft's ISA server firewall that is unmatched in the industry. This has made the Celestix MSA family the runaway market leader in ISA server appliances.***

### **Features and Benefits**

#### **Ease of Deployment**

Celestix MSA appliances are delivered completely loaded and configured for immediate use. There is no need to install any additional software. Celestix's unique SlingSHOT™ appliance engine with its jog dial and LED display allows the user to set initial configuration parameters like IP addresses in the most simple and direct way possible. Installation is typically performed in about 15 minutes from opening the box to a fully functional firewall. A single point of contact for both hardware and software support means that in the unlikely event that questions or problems should arise they are answered promptly without any finger pointing.

#### **Seamless Integration with Microsoft infrastructure**

ISA server 2006 integrates seamlessly with major Microsoft IT applications such as Sharepoint, Exchange Server and Active Directory. ISA Server is the easiest and most direct way to give external users access to enterprise applications such as email, web services or Sharepoint services while maintaining full access control and policy enforcement.

#### **Ease of Use**

Celestix has made ISA server even easier to use by adding an intuitive web-based management interface that can control and monitor all aspects of the ISA firewall. Standard methods of management are also supported but most users find the web-based management system much easier to use. The web-based interface is part of Celestix's SlingSHOT appliance engine and is unique to MSA appliances.

#### **State-of-the-Art Security Enhanced**

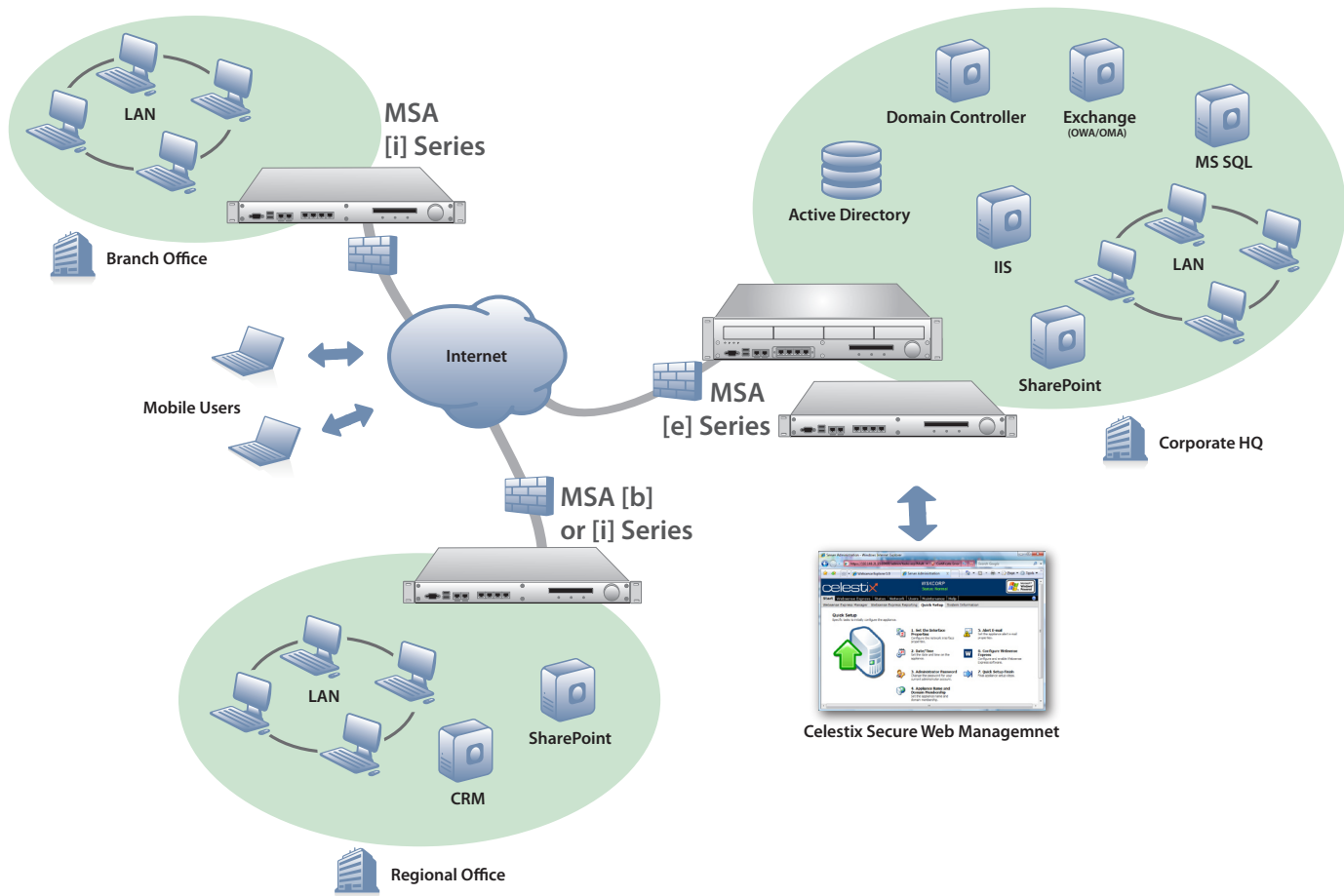
MSA appliances run Microsoft's Internet Security and Acceleration (ISA) server 2006 one of the most advanced third generation application layer firewalls on the market today. Celestix enhances the security of ISA Server by prehardening the operating system to ensure that it is secure against all known vulnerabilities and exploits.

### **Feature Summary**

- Microsoft ISA Server 2006
- Seamless integration with Microsoft IT infrastructure
- Wide range of performance models
- Fully configured ready to use out of the box
- Web GUI for easy configuration and management
- LCD Front panel and jog dial for ease of configuration and realtime status display
- One button system recovery to last good version or factory defaults
- Install a complete Firewall, VPN and caching solution in less than 15 minutes
- Network software update service
- High reliability features: redundancy, failover, load balancing
- Fully supported by Celestix. A single point of contact for any service issue
- Richest feature set and highest performance available at the price

### **Designed for:**

- The full range of enterprise network security deployments
- Scalability to meet continually increasing network requirements
- Maximum availability
- Seamless network and Active Directory integration
- Application publishing (reverse proxy)
- Internet proxy
- VPN gateway



### Superior Reliability, Maintainability and Availability

Celestix's SlingSHOT appliance engine makes several important enhancements to the overall reliability, maintainability and availability of the appliance that are not found on other appliances or on general purpose servers that may be used to run ISA.

- Only the Celestix MSA appliance with SlingSHOT provides a one-button disaster-recovery feature that can restore the entire system to its last known good state or to the factory default state. This includes application state as well as the operating system.
- Only the Celestix MSA appliance with SlingSHOT allows centralized software update management for secure, simple and reliable distribution of software patches and new applications.
- MSA 6000 and MSA 8000 appliances improve total system reliability and availability by making the most-failure-prone elements hot swappable and redundant to avoid a single point of failure. Power supplies, RAID disk arrays and fans can all be replaced without bringing down the system. They have built in redundancy so that a single failure of one of these critical elements will not halt the system. All Celestix MSA appliances can be used with uninterruptible power supplies for predictable robustness in the event of power failures.

### Superior Functionality

The combination of Microsoft ISA Server 2006 and Celestix's MSA appliances delivers much more functionality per dollar spent than any other firewall appliance. Celestix bundles in as standard features many functions and capabilities that other manufacturers offer only as extra price options.

- High Availability: All Celestix MSA appliances support either Active/Passive or Active/Active failover support. All models have integrated UPS support. Many models offer disk redundancy with RAID arrays and all 2U appliances have dual power supplies.
- Multi-level firewall: layer 1-7 stateful packet inspection
- NAT with application support for dozens of applications and protocols
- Virtual Private Networking with 100 or more VPN connections
- All Ethernet ports are 10/100/1000 autosensing full duplex
- SSL traffic inspection
- Integrated intrusion detection
- High performance web cache
- Application publishing (reverse proxy)
- Web filtering or Anti-virus scanning options

ISA Server supports the full range of Microsoft Network Access Protection with authentication using Active Directory, RADIUS, Kerberos and third party two factor authentication methods such as RSA SecureID.

## Editions and Models

Celestix offers MSA appliances in a wide spectrum of feature and performance configurations to meet the need of customers ranging from small business with a single protected LAN up to multi-national enterprises with many data centers and branch offices.

### License Editions

#### *[i] Workgroup Edition*

Workgroup edition is intended for organizations with a small number of protected LAN's. It is ideal for a company that wants to support up to 100 remote VPN users as well as web application publishing while simultaneously protecting a local network with a state-of-the art, third-generation application firewall. Workgroup edition supports a two-server Active/Passive failover configuration for high reliability.

#### *[b] Branch Office Edition*

Branch office edition enhances the common features of ISA Server 2006 with centralized management of multiple branch office sites. Branch office edition supports up to 1000 VPN users. High Availability is supported with Active/Active failover and Network Load Balancing between two servers. Centralized management allows users to easily enforce a common firewall policy and compliance auditing throughout the enterprise. At least one system within the enterprise must be running ISA Configuration Storage Server (CSS), this system can be either a ISA Enterprise Edition server or the Celestix MSA2000c configuration storage server.

#### *[e] Enterprise Edition*

Enterprise Edition is the full featured version of ISA Server 2006 for large enterprise users. It offers unlimited VPN connections and can support clusters of up to 32 servers with full active/active fail over and network load balancing between all servers.

### Models

#### **MSA2000**

Celestix's entry level server for small to medium enterprises, the MSA2000, is recommended for deployments with 100 or fewer users. It uses an Intel Celeron D processor to provide the most powerful yet economical application level firewall appliances available to small to medium businesses. The MSA2000's combination of powerful hardware and world class software far exceeds what is available in any comparably priced SMB firewall appliance.

**MSA2000i** includes ISA Workgroup Edition.

**MSA2000c** is a dedicated configuration storage server.

Note:

**MSA2000c** is not intended as a standalone security appliance. Its function is to provide remote configuration management services to a network of ISA server appliances running Branch Office Edition.

#### **MSA3000**

The Celestix MSA3000, for medium sized deployments of 100 to 250 users, increments hardware performance with a Pentium 4 processor. Additional processor power and memory ensures that the greater number of users supported by the MSA3000 will see no degradation in performance.

**MSA3000i** includes ISA Workgroup Edition.

**MSA3000b** includes ISA Branch Office Edition.

#### **MSA4000**

The Celestix MSA4000 is designed for deployments with 250 to 500 users. It uses a Pentium D dual core processor to ensure that the larger number of users continues to enjoy high performance. A hardware cryptographic accelerator offloads computer intensive cryptographic operations to support VPN users and public key infrastructure with no degradation in system performance.

**MSA4000i** is offered with ISA Server Workgroup Edition.

**MSA4000b** uses ISA Branch Office Edition.

#### **MSA5000**

The Celestix MSA5000 can support 500 to 750 users with an Intel Core 2-Duo processor. A hardware cryptographic accelerator performs both symmetric and public key cryptography to ensure that large numbers of VPN users do not slow down system performance.

**MSA5000e** includes ISA Server Enterprise Edition.

#### **MSA6000**

When security means availability, choose the MSA6000. The Celestix MSA6000 is a high reliability system intended for mission critical applications in large enterprises. MSA6000 is packaged in a 19" 2U chassis with fully redundant dual power supplies and a RAID 5 disk array. All disks, power supplies and fans are hot swappable so the system has built in redundancy in those components most likely to fail in service. A hardware cryptographic accelerator ensures that large numbers of VPN users will not slow down system throughput.

**MSA6000b** includes ISA Server Branch Office Edition.

**MSA6000e** includes ISA Enterprise Edition.

#### **MSA8000**

MSA8000 is Celestix's newest and highest performance appliance. Built on the new Celestix Scorpio-XP appliance platform, two Xeon Quad-core processors provide ample performance for the most demanding large enterprise deployments with up to 2000 users. The MSA8000 is a high availability 2U appliance with a 2 disk RAID 1 array, dual power supplies and hot swappable disks, power supplies and fans.

**MSA8000e** includes ISA Server Enterprise Edition.

## Plug In Software

All MSA appliances can be upgraded with additional plug in software functions.

### Websense Security Suite

Built on an enterprise-class Internet filtering platform, Websense Enterprise helps companies to improve employee productivity, conserve bandwidth, and mitigate security risks. Websense Enterprise integrated with MSA allows businesses to detect and manage employee access to the Internet and network applications such as Instant Messaging and Peer-to-Peer. Websense Enterprise leverages the packet-capturing capabilities of MSA allowing organizations to scale reliably as transaction volumes increase.

### Kaspersky® Anti-Virus

Kaspersky® Anti-Virus for Microsoft ISA Server is a tightly integrated solution that protects all incoming HTTP and FTP traffic on the local network. The application offers protection not only from viruses, but also from potentially harmful programs.

The solution is based on the Kaspersky Anti-Virus Engine, which provides one of the highest detection rates of malicious programs in the world.

Hardware	MSA2000		MSA3000		MSA4000		MSA5000		MSA6000		MSA8000
Platform	Scorpio-X										Scorpio-XP
CPU	Celeron D		Pentium 4		Pentium D Dual Core		Core 2 Duo		Core 2 Duo		2 x Xeon Quad Core
Clock (GHz)	2.66		3.00		3.00		2.13		2.40		2.50
Memory	1GB		2GB		2GB		3GB		3GB		3GB
L2 Cache	256KB		2MB		2x2MB		4MB		4MB		2x12MB
Front Side Bus	533MHz		800MHz		800MHz		1066MHz		1066MHz		1333MHz
Crypto Accelerator	✘		✘		✓		✓		✓		✓
Hard Drive	80GB SATA						160GB RAID 5			73GB 15K RPM SAS RAID 1	
10/100/1000 Ports	6										4
Power Supply	300W						2 x 320W			2 x 500W	
Form Factor	1U						2U				
Dimensions (W x D x H)	17.5" x 14.38" x 1.75" 44 cm x 36.5 cm x 4.4 cm						17.5" x 17.5" x 3.5" 44 x 44 x 8.9 cm			17.5" x 19.75" x 3.5" 44 x 50 x 8.9 cm	
OS	Windows Server 2003										
Model	MSA2000i	MSA2000c	MSA3000i	MSA3000b	MSA4000i	MSA4000b	MSA5000e	MSA6000b	MSA6000e	MSA8000e	
ISA2006 Ed	Workgroup	CSS	Workgroup	Branch	Workgroup	Branch	Enterprise	Branch	Enterprise	Enterprise	
NLB Array Size	n.a.	n.a.	n.a.	2	n.a.	2	32	2	32	32	
Simultaneous	<100	n.a.	100-250	100-250	250-500	250-500	500-750	500-800	500-800	800-2000	
VPN#	100	n.a.	100	no limit	100	no limit	1,000	no limit	no limit	no limit	

For more information about MSA appliances, contact Celestix today at:



Americas

+1 510 668.0700



United Kingdom

+44 (0) 1189 553276



Singapore

+65 6781.0700



India

+91 44 3910 3538



48001 Fremont Boulevard  
Fremont, California 94538  
www.celestix.com